

\$619,900 - 707 700 Ramage Close, Red Deer

MLS® #A2222061

\$619,900

3 Bedroom, 3.00 Bathroom, 1,350 sqft
Residential on 0.15 Acres

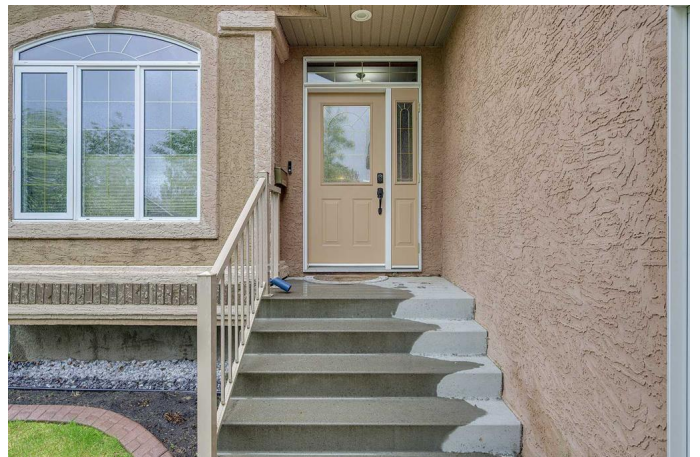
Rosedale Meadows, Red Deer, Alberta

Refined luxury, timeless elegance, and modern comfort define this exceptional residence nestled in one of Red Deer's most sought-after neighborhoods. Beyond its striking curb appeal and meticulously landscaped yard, enclosed by a premium, low-maintenance vinyl fence, this home offers a showcase of upscale interior features crafted for effortless living. Inside, you'll find thoughtfully curated finishes, high-end materials, and a layout designed for both sophistication and everyday ease.

Step inside and experience the perfect balance of luxury and functionality. Rich hardwood floors flow throughout the main level, complementing a warm and inviting layout that features two fireplaces, a wet bar, and main floor laundry for added convenience. The kitchen is a chef's dream, complete with a central island, gorgeous custom cabinetry, and premium finishes.

Designed for both entertaining and everyday comfort, this home includes prewired surround sound with ceiling speakers, in-floor heating, and an on-demand water heater. You'll also enjoy the modern comfort of central air conditioning, central vacuum system, and much more.

Whether you're hosting guests or relaxing with family, this prestigious property offers the perfect backdrop. This home is truly a



must-see to appreciate all it has to offer.

Built in 2004

Essential Information

| | |
|----------------|-------------|
| MLS® # | A2222061 |
| Price | \$619,900 |
| Bedrooms | 3 |
| Bathrooms | 3.00 |
| Full Baths | 2 |
| Half Baths | 1 |
| Square Footage | 1,350 |
| Acres | 0.15 |
| Year Built | 2004 |
| Type | Residential |
| Sub-Type | Detached |
| Style | Bungalow |
| Status | Active |

Community Information

| | |
|-------------|----------------------|
| Address | 707 700 Ramage Close |
| Subdivision | Rosedale Meadows |
| City | Red Deer |
| County | Red Deer |
| Province | Alberta |
| Postal Code | T4P 3X8 |

Amenities

| | |
|----------------|------------------------|
| Parking Spaces | 4 |
| Parking | Double Garage Attached |
| # of Garages | 2 |

Interior

| | |
|-------------------|--|
| Interior Features | Kitchen Island |
| Appliances | Central Air Conditioner, Dishwasher, Garage Control(s), Refrigerator, Washer/Dryer, Electric Range |
| Heating | Forced Air |
| Cooling | Central Air |
| Fireplace | Yes |

| | |
|-----------------|----------------|
| # of Fireplaces | 2 |
| Fireplaces | Gas |
| Has Basement | Yes |
| Basement | Finished, Full |

Exterior

| | |
|-------------------|--------------------|
| Exterior Features | Private Yard |
| Lot Description | Landscaped |
| Roof | Shingle |
| Construction | Stucco, Wood Frame |
| Foundation | Poured Concrete |

Additional Information

| | |
|----------------|----------------|
| Date Listed | May 20th, 2025 |
| Days on Market | 26 |
| Zoning | R1 |

Listing Details

| | |
|----------------|-----------------------------------|
| Listing Office | Royal LePage Network Realty Corp. |
|----------------|-----------------------------------|

Data is supplied by Pillar 9â„¢ MLS® System. Pillar 9â„¢ is the owner of the copyright in its MLS® System. Data is deemed reliable but is not guaranteed accurate by Pillar 9â„¢. The trademarks MLS®, Multiple Listing Service® and the associated logos are owned by The Canadian Real Estate Association (CREA) and identify the quality of services provided by real estate professionals who are members of CREA. Used under license.